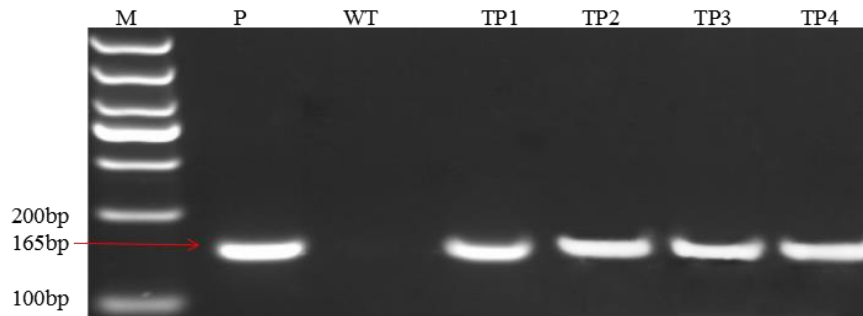


DOI: 10.17957/IJAB/15.1439 (IJAB-19-1751)

### Supplementary Data



**Supplementary Fig. S1:** Structure of transformation vector pSH-35S-SbSKC1 used in the study. RB: Right border of T-DNA, 35S: CaMV 35S poly A, LB: Left border of T-DNA



**Supplementary Fig. S2:** Molecular detection of transgenic poplar plants. After resistance selection and PCR identification, we obtained a total of 31 transgenic plants as identified by the high level of *SbSKC1* expression. M: DL1000; P: plasmid; WT: wild type; TP1-TP4: transgenic poplar strains.

**Supplement Table 1:** Primers for RT-qPCR

Gene	GenBank (ID)	Primer sequences (5'-3')
<i>SbSKC1</i>	XM_002457691.1	CTCTTCATGTCCGTCAACTCCAGG GGCGGTAGATACATCATGAGCACAT
<i>EF1</i>	FN356200	AAGCCATGGGATGATGAGAC ACTGGAGCCAATTTTGATGC
<i>ERF76</i>	XM002306676	ATGTGCGTATTGAAGGTGGCG CCTCCACATGCCGCTGTATTGG
<i>SOD1</i>	Potri:003G118400	GCCTTGCCTGAGATACTTAC GCTTCAGTCATAGTCTTCAC
<i>LEA1</i>	Potri:002G165000	CGAGGCAATCAACGGCAGAG CGATTTCCTGAGCAACATTC
<i>P450</i>	Potri:003G066400	CAACACAACCCACCAACAAG AGTTCGCCTATGAGATTGAG
<i>Laccase1</i>	Potri:010G183600	CCTGGTCGTGCTGCTTCTAG CCAGCCC GTTCTCATTTGCC

**Supplement Table S2:** Plant dry weight and root elongation

Plant types	WT1	TP1	TP2	TP3
Dry weight (g)	4.79	5.32	4.91	6.31
Root length (cm)	8.5	14.6	21.1	13.5

**Note:** Wild type (WT) and transgenic (TP1, TP2, TP3) poplar in after 10 d exposure to 150 mM NaCl. Plant dry weight is measured in one thousandth of an electronic scale; root length is measured by ruler.

**Supplement Table 3S:** Wild type and transgenic plants chlorophyll content

Plant type	WT	TP-1	TP-2	TP-3
Chlorophyll a	8.63±1.79	11.51±0.28*	8.02±1.11	12.50 ±0.8*
Chlorophyll b	3.83±0.58	5.84±0.37*	3.66±0.62	6.55±0.80*
Chlorophyll	12.46±2.37	17.35±0.65*	11.68±1.73	19.05±1.60*

**Note:** Wild type (WT) and transgenic (TP1, TP2, TP3) poplar in after 10 d exposure to 150 mM NaCl