

Supplementary Data

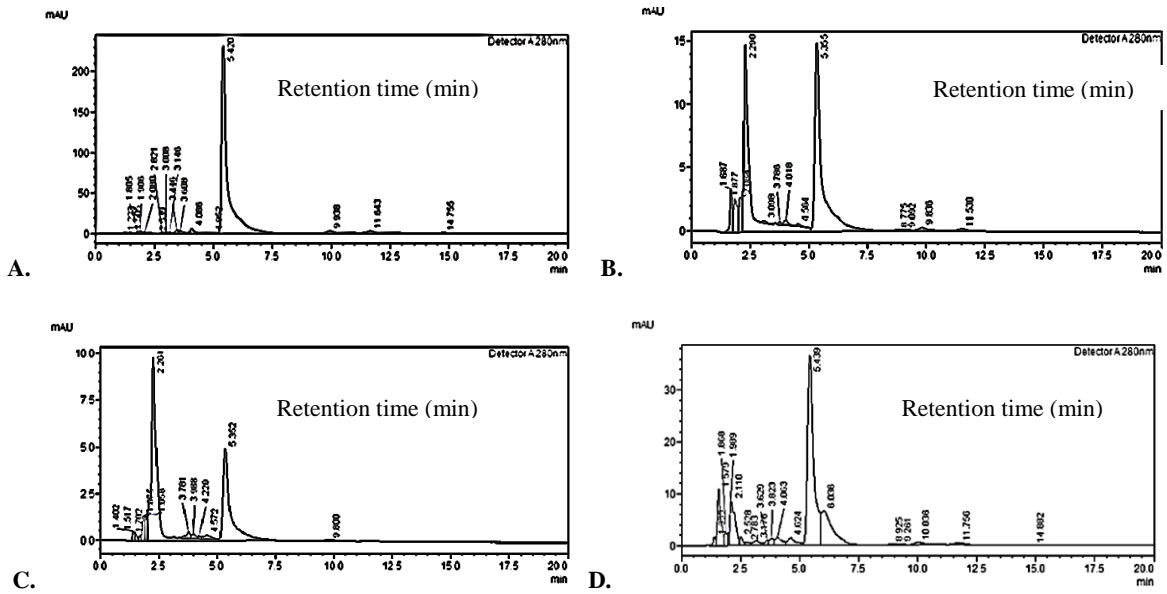


Fig. S1: Effect of pH on degradation of CPF (RT= 5.4 min) by MB490. (A) Control, (B) MB490 at pH 6 (C) pH 7 (D) pH 8.

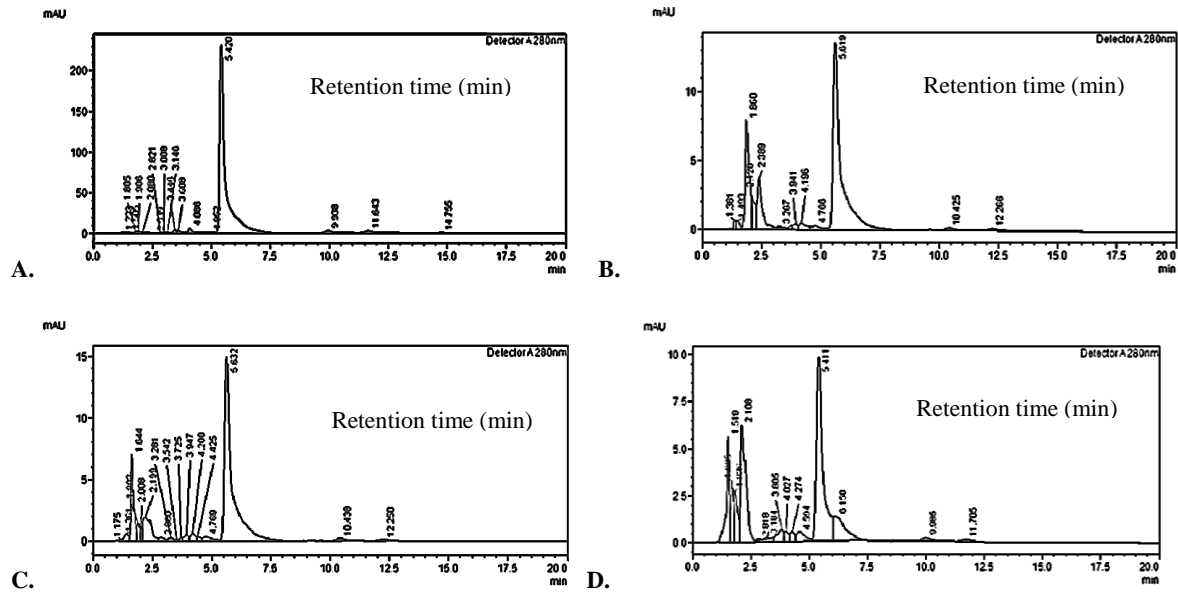


Fig. S2: Effect of pH on degradation of CPF (RT= 5.4 min) by MB497. (A) Control, (B) MB497 at pH 6 (C) pH 7 (D) pH 8.

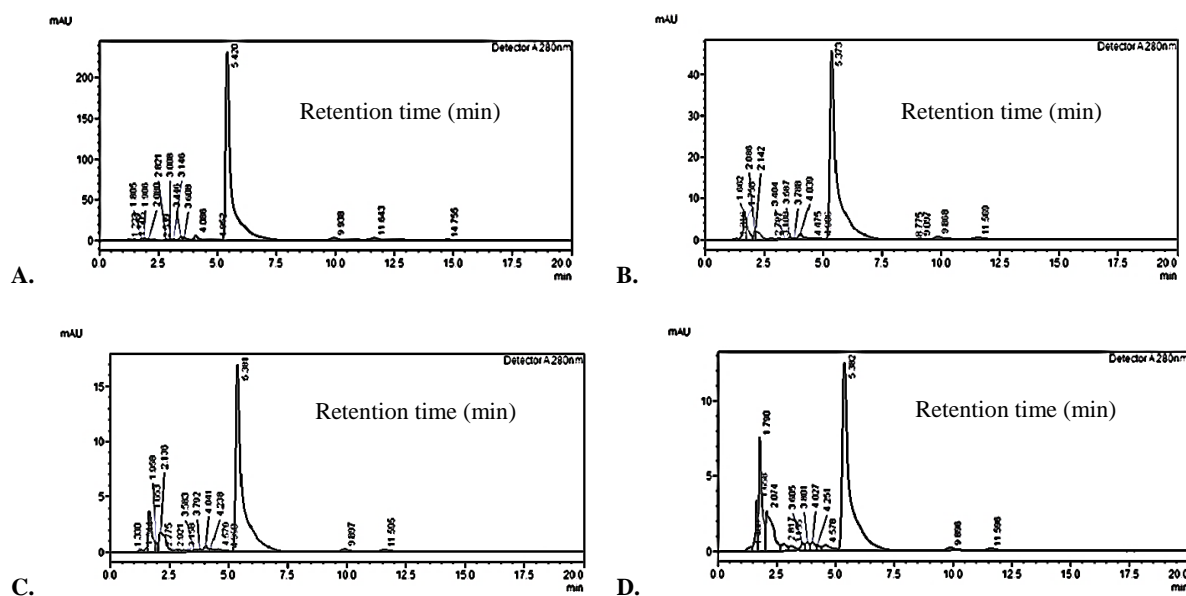


Fig. S3: Effect of pH on degradation of CPF (RT= 5.4 min) by MB498. (A) Control, (B) MB498 at pH 6 (C) pH 7 (D) pH 8.

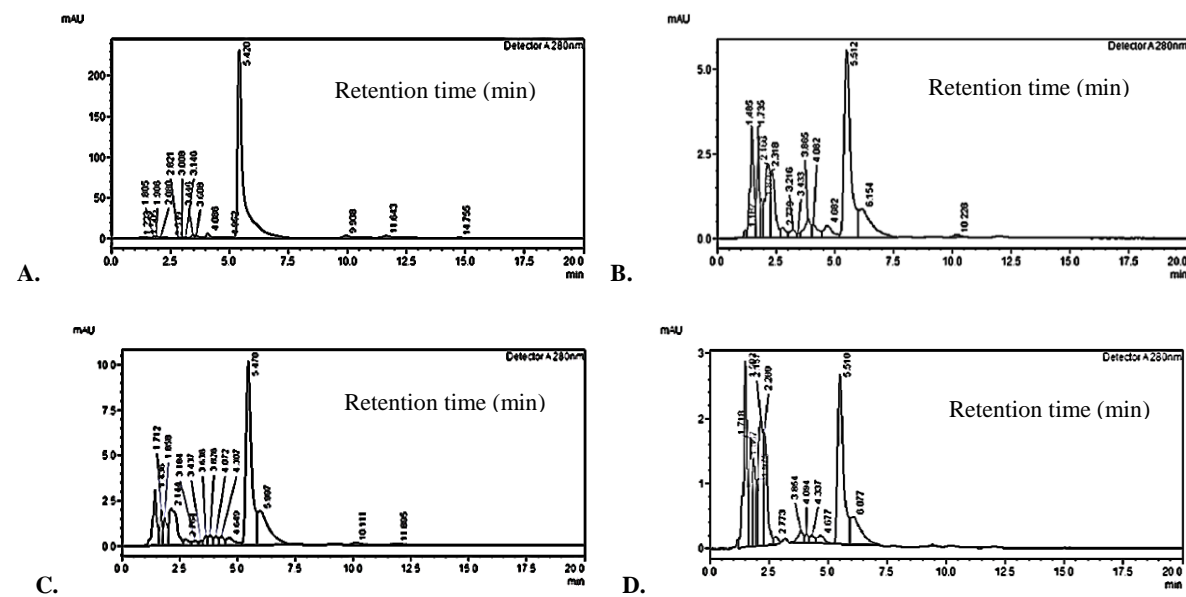


Fig. S4: Effect of pH on degradation of CPF (RT= 5.4 min) by MB504. (A) Control, (B) MB504 at pH 6 (C) pH 7 (D) pH 8. Note the peak for TCP (RT = 1.77 min) in figure B, C and D.