



Full Length Article

Early ROS Accumulation in Chloroplasts of *Nicotiana glutinosa* Infected by *Cucumber mosaic virus*

Jing Shang^{1,3*}, Lei Zhang¹, Qi Jia¹, Zhong-qin Tang¹, Shu Yuan², Hui Yang¹, Min Zhang¹ and Yun Huang¹

¹College of Agronomy and Key Laboratory for Major Crop Diseases, Sichuan Agricultural University, Chengdu 611130, China

²College of Resources and Environmental Sciences, Sichuan Agricultural University, Chengdu 611130, China

³Key Laboratory of Crop Ecophysiology and Farming System in Southwest China (Ministry of Agriculture), Sichuan Engineering Research Center for Crop Strip Intercropping System, Institute of Ecological Agriculture, Sichuan Agricultural University, Chengdu, 611130, China

*For correspondence: shangjing_wawa@163.com; shangjing_edu@163.com

Abstract

Reactive oxygen species (ROS) are considered to play an important role on the plant disease resistance. The accumulation of ROS was detected in chloroplasts (not in soluble fractions) from *Nicotiana glutinosa* leaves inoculated with *Cucumber mosaic virus* (CMV) in the early stage of infection (3 days post-inoculation (dpi)); though the accumulation of CMV was lower than that at 9 dpi. During the late stage of infection (9 dpi, disease development), ROS accumulation was detected both in cytoplasm and chloroplasts. At 3 dpi, a significant decrease of the activity of chloroplastic ascorbic acid peroxidase (APX) was observed involved in its elimination that correlated with ROS and TBARS accumulation. The decreased activity of chloroplastic APX was considered as a quick response for *Nicotiana glutinosa* to CMV. At the same time, the activity of cytoplasmic APX only slightly decreased. ROS as signaling molecules of infected cells originated from the chloroplast but not the cytoplasm. The damage of membrane by lipid peroxidation increased as ROS generation and the photosynthetic efficiency continues to decline in systemically-infected leaves. It suggested that an alteration of the chloroplastic structure and function was produced in early responses to CMV. © 2018 Friends Science Publishers

Keywords: ROS; *Cucumber mosaic virus*; Chloroplast; Oxidative stress

Introduction

Virus as biotic stress leads to a large number of Reactive oxygen species (ROS) accumulation in infected plants (Riedle-Bauer, 2000; Clarke *et al.*, 2002; Hernández *et al.*, 2006; Torres, 2010; Scheler *et al.*, 2013). Reactive oxygen species caused damage to cell components that resulted in oxidative stress (Tuteja *et al.*, 2009; Wi *et al.*, 2012). Hydrogen peroxide (H₂O₂) is a molecule involved in signaling trigger tolerance to various biotic stresses (Sofa *et al.*, 2015). During virus infection, defense responses are related to the ROS accumulation.

The antioxidase system protects plants against oxidative stress according to scavenging of ROS (Asada, 1999; Alscher *et al.*, 2002; Guo *et al.*, 2004; Gapińska *et al.*, 2008; Yang *et al.*, 2008; Pukacki and Kamińska-Rożek, 2013). The antioxidase contained superoxide dismutase (SOD), catalase (CAT), peroxidase (POD), ascorbate peroxidase (APX), glutathione reductase (GR), glutathione peroxidase (GPX) and glutathione-S-transferase (GST). Some chemical compound produced by plant (such as ascorbic acid, ASA; glutathione, GSH; phenolic compounds) were also related to oxidative stress. Reactive

oxygen species also influence the gene expression which regulate and control the plant response to pathogen and systemic signal transduction. Reactive oxygen species as a systemic signal induces antioxidant and defense responses in non-infected plant cells. The rapid accumulation of ROS at virus infection sites was very important (Hernández *et al.*, 2016). *Cucumber mosaic virus* caused oxidative stress, hydrogen-peroxide accumulation, and changes in the activity of antioxidants enzymes in infected plants (Song *et al.*, 2009). The responses to CMV infection in host plant were due to different factors, the host varieties, the ways of inoculation and the time when the growth of the new upper leaves appear. *Nicotiana glutinosa* showed a slow hypersensitive response (HR) which resulted in oxidative stress and programmed death (PCD) of infected leaves. That is order to elicit an imbalance of antioxidase system due to plant resistance to virus (Shang *et al.*, 2010).

The subcellular level of antioxidant systems may be imbalance, which affects the accumulation of early ROS. In the present work, in order to clarify the accumulation of the early active oxygen species in the sub cellular level, changes of the antioxidant systems at the subcellular level were analyzed. The physiological

parameters of infected plants were also detected. In addition, the virus accumulation was analyzed at different stage of infection so that we can learn more about the interaction between plant and pathogen.

Materials and Methods

Plant Material

Nicotiana glutinosa seedlings were grown in greenhouse with a 16 h-light and 8 h-dark cycles at 20-25°C. The plants were inoculated by CMV according to Zhao *et al.* (2013). After one day of inoculation, 5 mM ascorbic acid (AsA) and 5 mM dimethylthiourea (DMTU) was sprayed to the whole seedlings every day (Luo *et al.*, 2009).

CMV-CP Gene Detection

Total RNAs were isolated plant tissues by a Trizol reagent (Invitrogen Corp., Carlsbad, CA, USA). The quantitative real-time PCR analysis of *CMV-CP* gene expression was performed on a Bio-Rad iCycler according to Shang *et al.* (2009, 2011).

ROS Staining

Superoxide and H₂O₂ were detected by nitroblue tetrazolium (NBT) and 3, 3-diaminobenzidine (DAB), respectively (Yang *et al.*, 2004).

Determination of H₂O₂ and Oxidative Stress Parameters

The soluble fractions (the cytoplasm) and chloroplasts were divided for detection of H₂O₂ content, thiobarbituric acid reactive substances (TBARS) content and electrolyte leakage according to Shi *et al.* (2006). Lipid peroxidation and electrolyte leakage was measured according to Shang *et al.* (2009).

Measurement of Chlorophyll Fluorescence

Fluorescence parameters were detected by using a fluorometer (PAM-2100, Walz, Germany) according Yuan *et al.* (2007). The following parameters were calculated using the following equations: $Fv/Fm = (Fm - Fo)/Fm$, where Fo is the minimum fluorescence; the changes in the apparent PSII quantum yield $\Phi_{PSII} = (Fm' - Fs)/Fm'$, where Fm' is maximum fluorescence yield after light adaptation; and non-photochemical quenching $NPQ = Fm/Fm' - 1$.

Analysis of Gas Exchange

Photosynthetic gas exchange was detected using the instrument (HCM-1000, Walz, Effeltrich, Germany) according to Yuan *et al.* (2007). Leaf net photosynthetic rate (Pn) and stomatal conductance (Gs) were determined at a

temperature of 25°C, CO₂ concentration of 350 $\mu\text{mol mol}^{-1}$, 45% relative humidity, and photon flux density of 800 $\mu\text{mol m}^{-1} \text{s}^{-1}$. Leaf temperature was controlled using a leaf cuvette with a 1010-M system (TPS-1, PP system).

Antioxidants Enzymatic Assays

The soluble fractions and chloroplasts were separated for measurement of the enzyme activity. Infected plants at 3 dpi and 9 dpi were used for this operation. All operations were performed at 4°C according to Hernández *et al.* (2006). The activity of SOD and CAT were detected according to Shi *et al.* (2006). The POD activity was analyzed according to Van Rossum *et al.* (1997). The glucose-6P-dehydrogenase (G6PDH) activity was measured as described in Hernández *et al.* (2000). APX activity was detected by the method of Hernández *et al.* (2004). The activity of GPX and GR was determined according to Overbaugh and Fall (1985). GST activity was analyzed according to Habing and Jakoby (1981).

Statistical Analysis

An independent (unpaired) Student's t-test was chosen to test the significance of differences among means of small 'n' sample sets. A difference was considered to be statistically significant when $P < 0.05$.

Results

Symptom and CMV Replication

Slight mosaic symptom appeared at 3 dpi. More severe symptom was displayed over time. The expression of *CMV-CP* gene was detected by qPCR at 3 - 9 dpi. The accumulation of *CMV-CP* was tested in the different stage of disease development. The expression level of *CMV-CP* of systemically-infected leaves at 9 dpi was higher than that at 3 dpi. There was a slight increase of the *CMV-CP* level of in systemically-infected leaves at 9 dpi compared with that at 6 dpi (Fig. 1).

DAB and NBT Staining

It was shown that the highest H₂O₂ and superoxide accumulation occurred at systemically-infected leaves (Fig. 2). The results suggested that the accumulation of ROS was much higher in systemically-infected leaves at 9 dpi than at 3 dpi (Fig. 2).

ROS elimination was imitated in seedlings of *Nicotiana glutinosa* by exogenous AsA and dimethylthiourea (DMTU, a trap for H₂O₂) treatment (Fig. 3). AsA treatment can reduce the accumulation of ROS compared with systemically-infected leaves. But solo eliminator could neither alleviate the symptom, nor inhibit CMV replication at 9 dpi (Fig. 3).

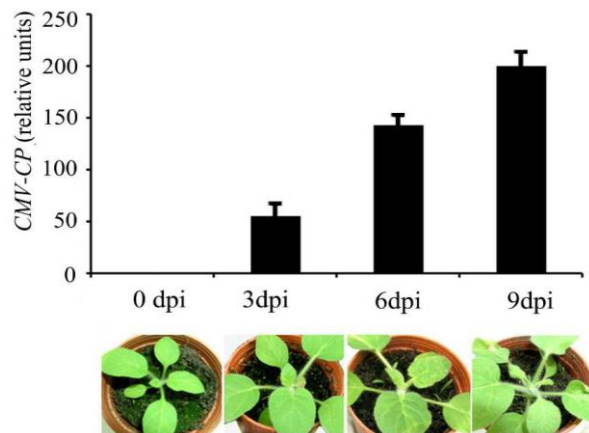


Fig. 1: The symptom and the expression of *CMV-CP* gene in systemically-infected leaves of *Nicotiana glutinosa* at 0, 3, 6 and 9 days post-inoculation (dpi)

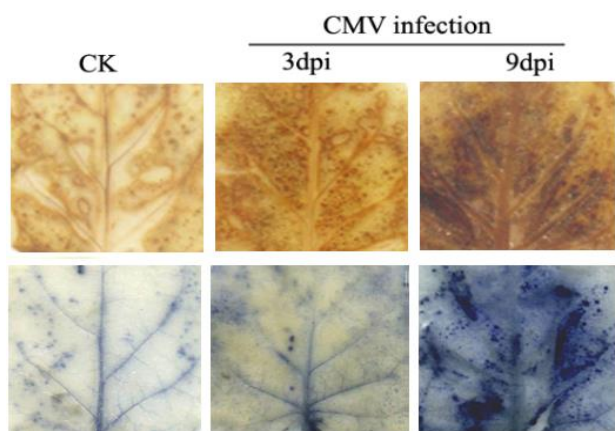


Fig. 2: DAB and NBT staining of systemically-infected leaves of *Nicotiana glutinosa*

The alleviation of symptom is crucial for plants. AsA and DMTU simultaneous co-pretreatment could alleviate the symptoms of systemically-infected leaves more effectively than AsA or DMTU single pretreatment. The co-pretreated plant was close to the healthy plant (Fig. 3).

H₂O₂ Content in Different Fractions

At the early stage of infection (3 dpi), the H₂O₂ levels was increased in the chloroplasts from inoculated plants compared with the control. In soluble fraction, the H₂O₂ levels did not showed a significant change compared with soluble fraction from healthy leaves (Fig. 4A). At the late stage (9 dpi), a severe oxidative stress was observed in leaves because of the increase in lipid peroxidation and electrolyte leakage, while the H₂O₂ levels greatly increased in soluble fractions and chloroplasts in systemically-infected leaves (Fig. 4B).

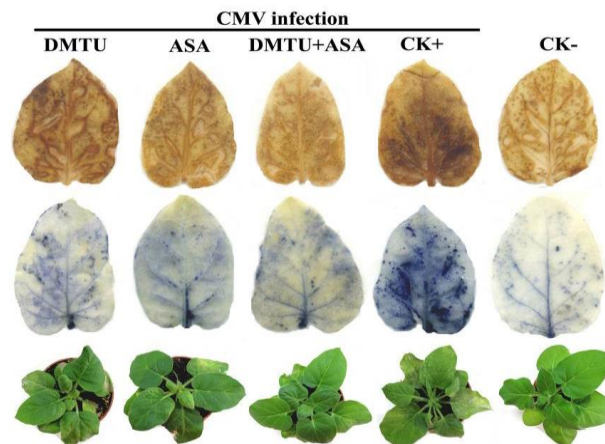


Fig. 3: Symptoms and ROS (at 9 dpi) of 5 mM ascorbic acid (AsA), 5 mM dimethylthiourea (DMTU)-treated *Nicotiana glutinosa* seedlings infected with CMV. AsA and DMTU were sprayed to the whole seedlings every day after virus inoculation; CK+ means virus infected control and CK- means control without virus. The figure shows H₂O₂ accumulation after DAB-staining (the first row), superoxide accumulation after NBT-staining (the second row) and symptoms of *N. glutinosa* infected with CMV (the third row)

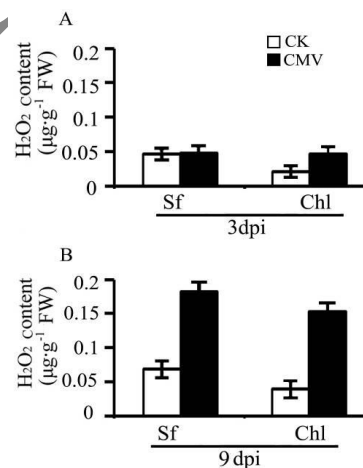


Fig. 4: Effect of CMV infection on H₂O₂ contents in different cell fractions from *Nicotiana glutinosa* leaves during (A) the initiation (3 dpi, early response) and (B) the elaboration (9 dpi, disease development) phases of disease development Sf, soluble fraction from leaves; Chl, chloroplast from leaves. Bars represent standard deviations of 3 independent replicates (n = 3) CK, control

TBARS Content in Different Fractions

TBARS content of the chloroplasts are significantly elevated at 3 dpi. At 9 dpi, due to a ROS rise in cytoplasm, TBARS content of cytoplasm began to rise.

This is a relatively slow process of TBARS accumulation and therefore TBARS content of cytoplasm is still less than of the chloroplast. After 3 dpi, the change of TBARS content of chloroplast was not significant (Fig. 5).

Changes in Antioxidant Enzymes Activity

The activities of antioxidant enzymes were changed in the soluble fractions and chloroplasts in infected cell. H_2O_2 is removed primarily by CAT enzyme. In soluble fraction from inoculated leaves, the CAT activity at 3 dpi and 9 dpi was remarkable higher than those from healthy leaves (Fig. 6B), which is consistent with the H_2O_2 contents. At 3 dpi, APX was declined while an increase in GST activity in the soluble fractions was found (Fig. 6A and F). In chloroplasts, H_2O_2 content increased while APX and G6PDH declined (Fig. 6A and H). The levels of antioxidant enzymes changed more at 9 dpi than 3 dpi. In soluble fractions, APX, and GR increased while GST, GPX, GR and SOD decreased (Fig. 6A, E and F). Activities of POD and SOD reflected a similar trend of CAT (Fig. 6B, C, D). It could be inferred that after virus infection, the enzymes activities were enhanced by ROS accumulation, and highest in chloroplasts from inoculated leaves.

Degrees of Membrane Injury of the Whole Leaf

TBARS is the product of lipid peroxidation, whose content showed the degree of membrane injury. The content of TBARS in systemically-infected leaves at 9 dpi was significantly higher than that at 3 and 6 dpi, and higher than to the healthy leaves (Fig. 7A). H_2O_2 levels showed a similar trend with the electrolyte leakage and the contents at 9 dpi were much higher (Fig. 7A and C). The stability of the plasma membrane was influenced by virus infection.

Chlorophyll Fluorescence

At 3dpi, NPQ increased which was the energy consumption involved in CO_2 assimilation. F_v/F_m , F_v'/F_m' slightly decreased in systemically-infected leaves at 3-9 dpi (Fig. 7F and G). At 3dpi, PSII quantum yield, Leaf net photosynthetic rate (P_n) was declined significantly. The stomatal conductance (G_s) was seen as a steady decline since leaves infected by virus (Fig. 7D, H and I).

Discussion

Nicotiana glutinosa is very susceptible to CMV (Shang *et al.*, 2009), as shown by the strong mosaic symptoms observed in present study. There was an obviously positive correlation between the accumulation of ROS and mosaic symptoms (Hernández *et al.*, 2006; Shang *et al.*, 2011). In CMV-infected plants, ROS generation associated with the accumulation of CMV-CP resulted in severe mosaic symptoms. Although slight symptoms were observed,

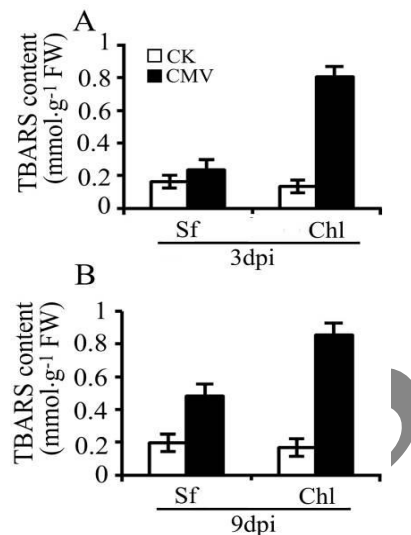


Fig. 5: Effect of CMV infection on TBARS contents in different cell fractions from in systemically-infected leaves of *Nicotiana glutinosa* during (A) the initiation (3 dpi, early response) and (B) the late stage (9 dpi, disease development) phases of disease development. Sf, soluble fraction from leaves; Chl, chloroplast from leaves. Bars represent standard deviations of 3 independent replicates ($n = 3$). CK, control

ROS was accumulated in chloroplasts of *Nicotiana glutinosa* in the initiation phase of infection (3 dpi). At the same time, ROS content in the cytoplasm of infected cells were similar to the control. It suggested that ROS originated in the chloroplast of infected cells at the early stage of infection. The extent of membrane injury was shown by TBARS and electricity permeability (Nanjo *et al.*, 1999; Luo *et al.*, 2011). At the early stage of infection, the oxidative stress parameters were changed due to the ROS accumulation in the chloroplast of infected cells.

Symptom formation is a time-consuming process and early symptoms were alleviated by AsA treatment. Solo ROS eliminators could not alleviate symptom. Salicylic acid (SA) was strictly correlated to H_2O_2 content (Mateo *et al.*, 2006; Shang *et al.*, 2009; Vlot *et al.*, 2009). Salicylic acid burst and SA-related gene expression was inhibited by AsA treatment in virus infected plants (Wang *et al.*, 2011), resulting in declined of ROS accumulation (Mittler *et al.*, 2004; Wang *et al.*, 2011).

ROS accumulation also made the endomembrane system of the chloroplast be destroyed (Moore *et al.*, 2001). The increasing energy dissipation in systemically-infected leaves, which lost as thermal energy, could not be used in photosynthesis (Shangguan *et al.*, 2000). That was the reason why net photosynthetic rate declined along with the decrease in the stomatal conductance. Finally, biomass declined in systemically-infected leaves leading to the formation of mosaic symptoms.

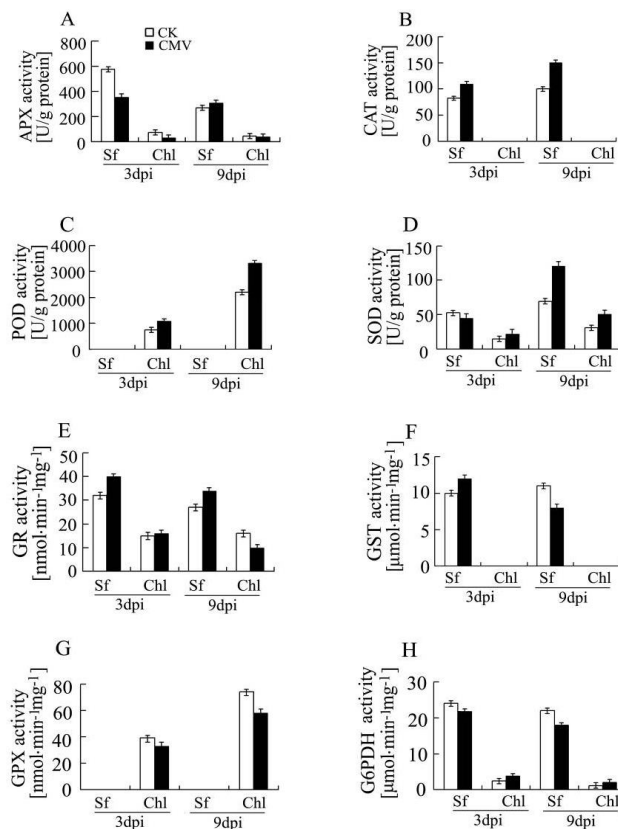


Fig. 6: Antioxidant enzyme activities in different cell fractions from systemically-infected leaves of *Nicotiana glutinosa* during the initiation (3 dpi, early response) and the late stage (9 dpi, disease development). Bars represent standard deviations of 3 independent replicates (n = 3). CK, control

H₂O₂ must be removed from cells to maintain healthy metabolic function in plant cell (Dat *et al.*, 2000). Under the light, the chloroplast is the main organ that produces ROS. Some H₂O₂ scavenging enzyme such as CAT was found in the cytoplasm but not in chloroplasts. Instead of that, APX was a key H₂O₂ eliminator in chloroplasts (Simonetti *et al.*, 2010). In the chloroplast of infected cells, APX decreased for increasing H₂O₂ elimination.

The chloroplastic APX was encoded by nuclear genes. APX was synthesized in the cytoplasm, but cannot be transferred to the chloroplast, which led to the accumulation of ROS in the chloroplast. The conclusion was proved by the decreases in cytoplasmic APX activity. Changes in cytoplasmic APX activity suggested that viral infection resulted in the disruption of chloroplast protein transport. That would explain why ROS burst occurring in the chloroplasts earlier than in the cytoplasm of infected cells. ROS as signaling molecules in cells originated from the chloroplast rather than the cytoplasm.

The accumulation of reactive oxygen species resulted in membrane injury of the chloroplast. The extent of

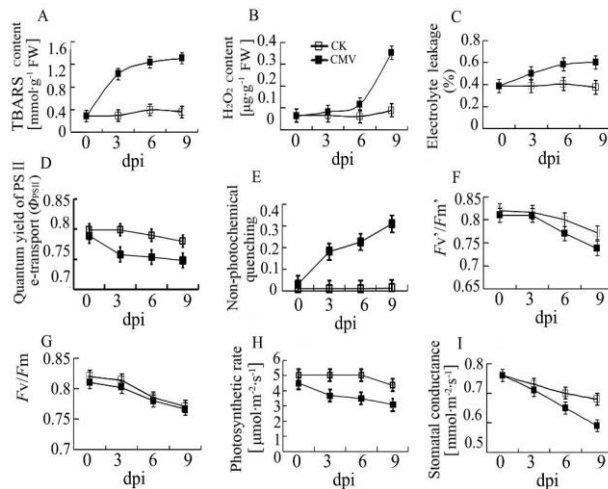


Fig. 7: (A) TBARS, (B) Hydrogen peroxide, (C) Electrolyte leakage, (D) PSII quantum yield, (E) Non-photochemical quenching capacity, (F) Fv'/Fm', (G) Fv/Fm, (H) Leaf net photosynthetic rate and (I) stomatal conductance in systemically-infected leaves of *Nicotiana glutinosa* at 3-9 days post-inoculation (dpi). Bars represent standard deviations of 3 independent replicates (n = 3). CK, control

membrane injury was shown by TBARS and electricity permeability (Nanjo *et al.*, 1999). Chloroplast degradation, resulting in the block for pigment-protein synthesis (Moore *et al.*, 2001), and consequently the chlorophylls reduced. The lack of chlorophyll led to a sharp decline in the photosynthetic rate. At the same time, the destruction of chloroplast membrane structure resulted in the damage of electron transport chain for photosynthesis. Light energy dissipated into heat energy.

Conclusion

The results of present study suggest that antioxidant enzyme activities changed in the chloroplasts of *Nicotiana glutinosa* in response to CMV infection. The antioxidant enzyme system in chloroplast prior to that in cytoplasm provides a rapid response to the early stages of disease development. Chloroplasts are important organs of plants and very sensitive to pathogenic invasion. The preferential activation of antioxidant enzyme system in chloroplast reflects the optimal allocation of defense resources. That was also the result of natural selection.

Acknowledgements

This study was supported by grants from the National key research and development plan, Project No. 2017YFD0301704; Sichuan Provincial Science and Technology Project, Project No. 2016NYZ0053; Research Foundation of Sichuan Provincial Education Department (035Z1038).

References

- Asada, K., 1999. The water-water cycle in chloroplasts: scavenging of active oxygens and dissipation of excess photons. *Annu. Rev. Plant Physiol. Plant Mol. Biol.*, 50: 601–639
- Alscher, R.G., N. Erturk and L.S. Heath, 2002. Role of superoxide dismutases (SODs) in controlling oxidative stress in plants. *J. Exp. Bot.*, 53: 1331–1341
- Clarke, S.F., P.L. Guy, D.J. Burrill and P.E. Jameson, 2002. Changes in the activities of antioxidant enzymes in response to virus infection and hormone treatment. *Physiol. Plant.*, 114: 157–164
- Dat, J., S. Vandenamee, E. Vranová, M. Van Montagu, D. Inzé and F. Van Breusegem, 2000. Dual action of the active oxygen species during plant stress responses. *Cell Mol. Life Sci.*, 57: 779–795
- Guo, T., G. Zhang, M. Zhou, F. Wu and J. Chen, 2004. Effects of aluminum and cadmium toxicity on growth and antioxidant enzyme activities of two barley genotypes with different Al resistance. *Plant Soil*, 25: 241–248
- Gapińska, M., M. Skłodowska and B. Gabara, 2008. Effect of short- and long-term salinity on the activities of antioxidative enzymes and lipid peroxidation in tomato roots. *Acta Physiol. Plant.*, 30: 11–18
- Habing, W.H. and W.B. Jakoby, 1981. Assays for differentiation of glutathione S-transferases. *Meth. Enzymol.*, 77: 398–405
- Hernández, J.A., G. Gullner, M.J. Clemente-Moreno, A. Künstler, C. Juhász, P. Díaz-Vivancos and L. Király, 2016. Oxidative stress and antioxidative responses in plant-virus interactions. *Physiol. Mol. Plant Pathol.*, 94: 134–148
- Hernández, J.A., P. Díaz-Vivancos, M. Rubio, E. Olmos, A. Ros-Barceló and P. Martínez-Gómez, 2006. Long-term PPV infection produces an oxidative stress in a susceptible apricot cultivar but not in a resistant cultivar. *Physiol. Plant.*, 126: 140–152
- Hernández, J.A., A. Jiménez, P.M. Mullineaux and F. Sevilla, 2000. Tolerance of pea (*Pisum sativum* L) to long-term salt stress is associated with induction of antioxidant defenses. *Plant Cell Environ.*, 23: 853–862
- Hernández, J.A., M. Rubio, E. Olmos, A. Ros-Barceló and P. Martínez-Gómez, 2004. Oxidative stress induced by long-term Plum Pox virus infection in peach (*Prunus persica* L cv GF305). *Physiol. Plant.*, 122: 486–495
- Luo, M.H., S. Yuan, Y.E. Chen, W.J. Liu, J.B. Du, T. Lei, M.B. Wang and H.H. Lin, 2009. Effects of salicylic acid on the photosystem II of barley seedlings under osmotic stress. *Biol. Plant.*, 53: 663–669
- Luo, Y., J. Shang, P.P. Zhao, S. Yuan, D.H. Xi and H.H. Lin, 2011. Application of jasmonic acid followed by salicylic acid inhibits *Cucumber mosaic virus* replication. *Plant Pathol. J.*, 27: 53–58
- Mateo, A., D. Funck, P. Müller, B. Kular, P.M. Mullineaux and S. Karpinski, 2006. Controlled levels of salicylic acid are required for optimal photosynthesis and redox homeostasis. *J. Exp. Bot.*, 57: 1795–1807
- Mittler, R., S. Vanderauwera, M. Gollery and F. Van Breusegem, 2004. Reactive oxygen gene network of plants. *Trends Plant Sci.*, 9: 490–498
- Moore, C.J., P.W. Sutherland, R.L.S. Forster, R.C. Gardner and R.M. MacDiarmid, 2001. Dark green islands in plant virus infection are the result of posttranscriptional gene silencing. *Mol. Plant-Microbe Inter.*, 14: 939–946
- Nanjo, T., M. Kobayashi, Y. Yoshida, Y. Kakubari, K. Yamaguchi-Shinozaki and K. Shinozaki, 1999. Antisense suppression of proline degradation improves tolerance to freezing and salinity in *Arabidopsis thaliana*. *FEBS Lett.*, 461: 205–210
- Overbaugh, J.M. and R. Fall, 1985. Characterization of a selenium-independent glutathione peroxidase from *Euglena gracilis*. *Plant Physiol.*, 77: 437–442
- Pukacki, P.M. and E. Kamińska-Rożek, 2013. Differential effects of spring reacclimation and deacclimation on cell membranes of Norway spruce seedlings. *Acta Soc. Bot. Pol.*, 82: 77
- Riedle-Bauer, M., 2000. Role of reactive oxygen species and antioxidant enzymes in systemic virus infections of plants. *J. Phytopathol.*, 148: 297–302
- Shangguan, Z.P., M.G. Shao and J. Dyckmans, 2000. Effects of nitrogen nutrition and water deficit on net photosynthetic rate and chlorophyll fluorescence in winter wheat. *J. Plant Physiol.*, 156: 46–51
- Scheler, C., J. Durner and J. Astier, 2013. Nitric oxide and reactive oxygen species in plant biotic interactions. *Curr. Opin. Plant Biol.*, 16: 534–539
- Shang, J., D.H. Xi, Q.R. Huang, M.Y. Xu, S. Yuan, S.D. Wang, S.D. Jia, S. Cao, Z.L. Zhou and H.H. Lin, 2009. Effect of two satellite RNAs on *Nicotiana glutinosa* infected with *Cucumber mosaic virus* (CMV). *Physiol. Mol. Plant Pathol.*, 74: 184–190
- Shang, J., D.H. Xi, S. Yuan, F. Xu, M.Y. Xu, H.L. Qi, S.D. Wang, Q.R. Huang, L. Wen and H.H. Lin, 2010. Difference of Physiological Characters in Dark Green Islands and Yellow Leaf Tissue of *Cucumber mosaic virus* (CMV)-Infected *Nicotiana tabacum* Leaves. *Z. Naturforsch.*, 65: 73–78
- Shang, J., D.H. Xi, F. Xu, S.D. Wang, S. Cao, M.Y. Xu, P.P. Zhao, J.H. Wang, S.D. Jia, Z.W. Zhang, S. Yuan and H.H. Lin, 2011. A broad-spectrum, efficient and nontransgenic approach to control plant viruses by application of salicylic acid and jasmonic acid. *Planta*, 233: 299–308
- Shi, Q.H., Z.Y. Bao, Z.J. Zhu, Q.S. Ying and Q.Q. Qian, 2006. Effects of different treatments of salicylic acid on heat tolerance, chlorophyll fluorescence, and antioxidant enzyme activity in seedlings of *Cucumis sativa* L. *Plant Growth Regul.*, 48: 127–135
- Wi, S.J., N.R. Ji and K.Y. Park, 2012. Synergistic Biosynthesis of Biphasic Ethylene and Reactive Oxygen Species in Response to Hemibiotrophic *Phytophthora parasitica* in Tobacco Plants. *Plant Physiol.*, 159: 251–265
- Sofó, A., A. Scopa, M. Nuzzaci and A. Vitti, 2015. Ascorbate peroxidase and catalase activities and their genetic regulation in plants subjected to drought and salinity stresses. *Int. J. Mol. Sci.*, 16: 13561–13578
- Song, X.S., Y.J. Wang, W.H. Mao, K. Shi, Y.H. Zhou, S. Noguchis and J.Q. Yu, 2009. Effects of *Cucumber mosaic virus* infection on electron transport and antioxidant system in chloroplasts and mitochondria of cucumber and tomato leaves. *Physiol. Plant.*, 135: 246–257
- Simonetti, E., E. Alba, M.J. Montes, Á. Delibes and I. López-Braña, 2010. Analysis of ascorbate peroxidase genes expressed in resistant and susceptible wheat lines infected by the cereal cyst nematode, *Heterodera avenae*. *Plant Cell Rep.*, 29: 1169–1178
- Torres, M.A., 2010. ROS in biotic interactions. *Physiol. Plant.*, 138: 414–429
- Tuteja, N., P. Ahmad, B.B. Panda and R. Tuteja, 2009. Genotoxic stress in plants: Sheddinglight on DNA damage, repair and DNA repair helicases. *Mutat Res.*, 681: 134–149
- Van Rossum, M.W.P.C., M. Alberda and L.H.W. Van der Plas, 1997. Role of oxidative damage in tulip bulb scale micropropagation. *Plant Sci.*, 130: 207–216
- Vlot, A.C., D.A. Dempsey and D.F. Klessig, 2009. Salicylic acid, a multifaceted hormone to combat disease. *Ann. Rev. Phytopathol.*, 47: 177–206
- Wang, S.D., F. Zhu, S. Yuan, H. Yang, F. Xu, J. Shang, M.Y. Xu, S.D. Jia, Z.W. Zhang, J.H. Wang, D.H. Xi and H.H. Lin, 2011. The roles of ascorbic acid and glutathione in symptom alleviation to SA-deficient plants infected with RNA viruses. *Planta*, 234: 171–181
- Yang, Y., C. Han, Q. Liu, B. Lin and J. Wang, 2008. Effect of drought and low light on growth and enzymatic antioxidant system of *Picea asperata* seedlings. *Acta Physiol. Plant.*, 30: 433–440
- Yang, Y.N., M. Qi and C.S. Mei, 2004. Endogenous salicylic acid protects rice plants from oxidative damage caused by aging as well as biotic and abiotic stress. *Plant J.*, 40: 909–919
- Yuan, S., Z.L. Liu, W.J. Liu, T. Lei, M.H. Luo, J.B. Du, J.H. Wang and H.H. Lin, 2007. A chlorophyll-less barley mutant “NYB” is insensitive to water stress. *Z. Naturforsch.*, 62: 403–409
- Zhao, P.P., J. Shang, Z.C. Guo, H.F. Xie, D.H. Xi, X. Sun and H.H. Lin, 2013. Role of jasmonic acid and salicylic acid on *Arabidopsis* plants infected *Cucumber mosaic virus* acclimation to various temperatures. *Russ. J. Plant Physiol.*, 60: 672–680